

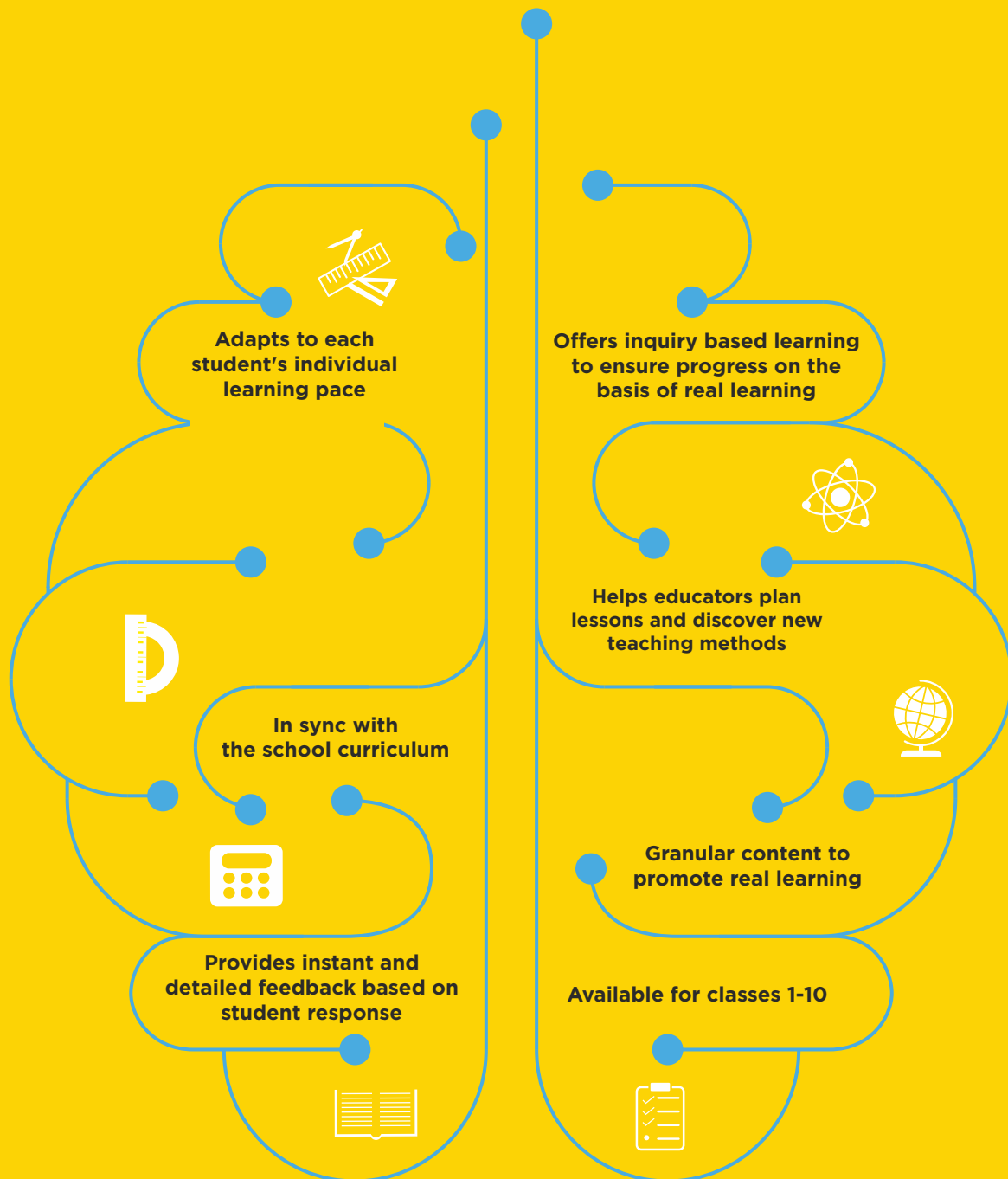
Learning that
keeps pace
with you



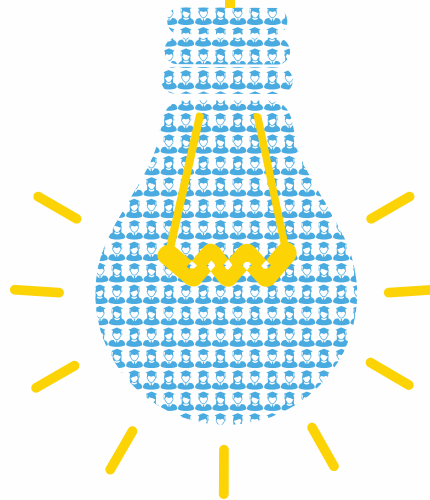
MINDSPARK^{EI}

WHAT IS MINDSPARK?

An online adaptive, practice and learning tool, Mindspark is an internet-based programme that allows each student to **learn with understanding**.



HOW MINDSPARK WORKS



Finely graded questions as per skill level



Questions synchronised with current learning level



Focus on understanding and analytical thinking



Helps students discover the *why* behind Maths

Mindspark sample question

One of the pieces below is $\frac{1}{12}$ of a pizza, and the other one is $\frac{1}{5}$ of the same pizza.



A



B

Which of the pieces is $\frac{1}{5}$ of the pizza?

Show Hint

☐ A

☐ B

- One in a series of questions on applying the understanding of unit fractions to a real life context
- Addresses the idea that $\frac{1}{5}$ is greater than $\frac{1}{12}$ which is counter intuitive
- Captures the misconception of extending the idea of whole number reasoning to fractional quantities

BENEFITS FOR STUDENTS

Mindspark questions are designed to help students learn with understanding



Explanations that build conceptual clarity



Questions that trigger critical thinking



Instant feedback that clears incorrect understanding



How Mindspark helps students succeed

ACTIVITIES
Builds engagement & helps students practice



CHALLENGE QUESTIONS
A set of questions that require application of multiple concepts



TIMED TESTS
Build computational fluency



STEP-BY-STEP SOLVING
Provides intelligent step-wise evaluation of responses



EXAM CORNER
Helps students prepare for exams/quizzes



REVISION SESSIONS
Periodic revisions to improve understanding of weaker concepts



REWARDS
Motivation and recognition based on performance



Solve for x
 $5x + 5 = 25$

✗	$5x$	=	25	You missed out a term: 5
1	$5x + 25$	=	-5	✓
✗	$5x$	=	-5 - 25	To move -25 from the left side to the right side you need to change the sign of the term.
2	$5x$	=	-5 + 25	✓
3	$5x$	=	20	✓
✗	x	=	3	To isolate x you need to divide by 5 on both the sides
∴	x	=	4	✓

BENEFITS FOR TEACHERS



PLAN: Teachers can use interesting ideas that are research based to introduce/teach a topic, see videos and common wrong answer report to find common misconceptions in the topic



TEACH: Customise the topics in Mindspark to suit your teaching plan



MONITOR: Live class – instant feedback on class performance when they are attempting Mindspark



REMEDiate: Address learning gaps shown in class-wise reports, common wrong answer report and use the student trail to see the student's learning path

MINDSPARK IN SCHOOL

MON

Topic is introduced in class and activated in Mindspark

TUE

Student attempts the topic in Mindspark, teacher gets a list of misconceptions and learning gaps

WED

Teacher addresses learning gaps and continues teaching

THU

Students continue the topic in Mindspark

FRI

Teacher uses Mindspark insights to revise the topic, plans new topics by referring to resources in the Teacher Interface

The days mentioned are indicative

Common wrong answer report

- A powerful tool that helps diagnose misconceptions at an early stage.
- Teachers can generate the report after every Mindspark session and use the questions to reinforce learning.

7

298 = 200 + 90 + 8

Which of the following is also an expanded form of 298?

A. 90 + 200 + 8

29.2%

B. 200 + 9 + 8

54.2%

C. 80 + 200 + 9

4.2%

D. 20 + 900 + 8

12.5%

- Option-wise performance

Answer:

298 = 90 + 200 + 8

School Average

National Average

Class performance

Avg % correct = 40.5%

Children who did not get it correct: Gr Tharshini (3A), Vidhur Varshan (3A), Shrinidhi S (3A), Nivetha S (3A)

Class report

- Provides a snapshot view of class-wise students' performance.
- Teachers can identify specific strong and weak areas of students in the class.

📊 **Class Report**

👤 **Student-wise Usage Report**

👤 **Individual Student Report**

Class 4

Section B

Date Range Last 30 days

?

Class Report for class 5 Explorers from 02/11/2015 to 01/12/2015

Print

Overall Usage: Average

Highlights

Lowest Usage
Tanvi Balani, Aryan Jani and Adi Malhotra

Children with all topics complete
Shreya Agrawal, Iva kothari and Vihaan Tandon

More [Student-wise Usage Report](#)

Overall Accuracy: Good

Highlights

Highest Accuracy (over 80%)
'Matching shapes to their outlines(interactive)', 'Vocabulary-building for spatial understanding' and 'Rounding off a 3-digit number to the nearest 100'

Misconceptions identified
'Understanding the meaning of equal sign', 'Reducing fraction' and 'Misconception that if two angles in a triangle are given to be acute then the triangle is acute'

More [Topic Accuracy Report](#)

Topic Progress

Mass and capacity

69%

Triangle and triangle properties - Custom 1

60%

Problem solving

50%

As Progress in the class

50%

Areas Handled by Mindspark

- Check the [Common Wrong Answer report](#) to see the most problematic questions in your class.
- This activity helped children resolve misconceptions in 'Misconception that if two angles in a triangle are given to be acute then the triangle is acute.' in the topic 'Triangles, triangle properties and congruence'
- '7 Dwarfs' was the most attempted activity by children of 5Explorers. [Play it.](#)

TEACHER INTERFACE

Topic Progress Report

Know where every student stands in the topic

Topic Page / Research
Topic Accuracy Report
Topic Progress Report

Class:
Section:
Topic:

Average Progress of class : 70%
Number of Students completed the topic : 12

S. No	Students	Progress	Total Qs	% Correct	Total Attempts	Learning units not cleared	Trail
1.	Aastha Bhargava	<div><div></div></div> 100% <small>↓ R</small>	44	61.4	2		Trail
2.	Adrika Sarkar	<div><div></div></div> 100% <small>↓ R</small>	33	90.9	2		Trail
3.	Ainesh Soni	<div><div></div></div> 100%	24	62.5	1		Trail
4.	Ananya Rajani	<div><div></div></div> 100%	0	0			Trail
5.	Bhaumik Khatnani	<div><div></div></div> 60%	16	56.3	1		Trail
6.	Devanshi Khaitan	<div><div></div></div> 100% <small>↓ R</small> ★	379	98.7	24		Trail
7.	Janya Gupta	<div><div></div></div>	0	0			Trail

★ Going to higher level
★ Currently in a lower level

↓ indicates current position of students who have fallen back in the topic in the first attempt
↓ R indicates current position of students in case of repeat attempt in the topic.

(Note: This indication is not available to the student)

Topic Customisation

Customise Mindspark to suit your teaching plan

Properties of whole numbers (Class-6)
Do Mindspark

Sr. No.	Learning Unit	Mindspark Recommended	CBSE	ICSE	IGCSE
1	Knowing multiplication facts and commutativity +	<input type="checkbox"/>	<input checked="" type="checkbox"/>	<input type="checkbox"/>	<input type="checkbox"/>
Timed Test: Multiplication tables of numbers from 1 to 10 Activity: Save Sparkie - Multiplication (tables 1, 9)					
2	Relating division to multiplication +	<input type="checkbox"/>	<input type="checkbox"/>	<input type="checkbox"/>	<input type="checkbox"/>
Remedial: Interpreting number statements in the form, /100=20					
3	Problems involving more than one operation +	<input type="checkbox"/>	<input type="checkbox"/>	<input type="checkbox"/>	<input type="checkbox"/>
4	Understanding commutativity of addition and property of addition with zero +	<input type="checkbox"/>	<input type="checkbox"/>	<input checked="" type="checkbox"/>	<input type="checkbox"/>
5	Introduction to natural numbers	<input checked="" type="checkbox"/>	<input checked="" type="checkbox"/>	<input checked="" type="checkbox"/>	<input checked="" type="checkbox"/>
6	Introduction to whole numbers	<input checked="" type="checkbox"/>	<input checked="" type="checkbox"/>	<input checked="" type="checkbox"/>	<input checked="" type="checkbox"/>
7	Understanding associativity and distributivity	<input checked="" type="checkbox"/>	<input checked="" type="checkbox"/>	<input checked="" type="checkbox"/>	<input checked="" type="checkbox"/>
8	Properties of Operations on Whole Numbers	<input checked="" type="checkbox"/>	<input checked="" type="checkbox"/>	<input checked="" type="checkbox"/>	<input checked="" type="checkbox"/>
9	Distributive Property of Multiplication	<input checked="" type="checkbox"/>	<input checked="" type="checkbox"/>	<input checked="" type="checkbox"/>	<input checked="" type="checkbox"/>

Topic Research

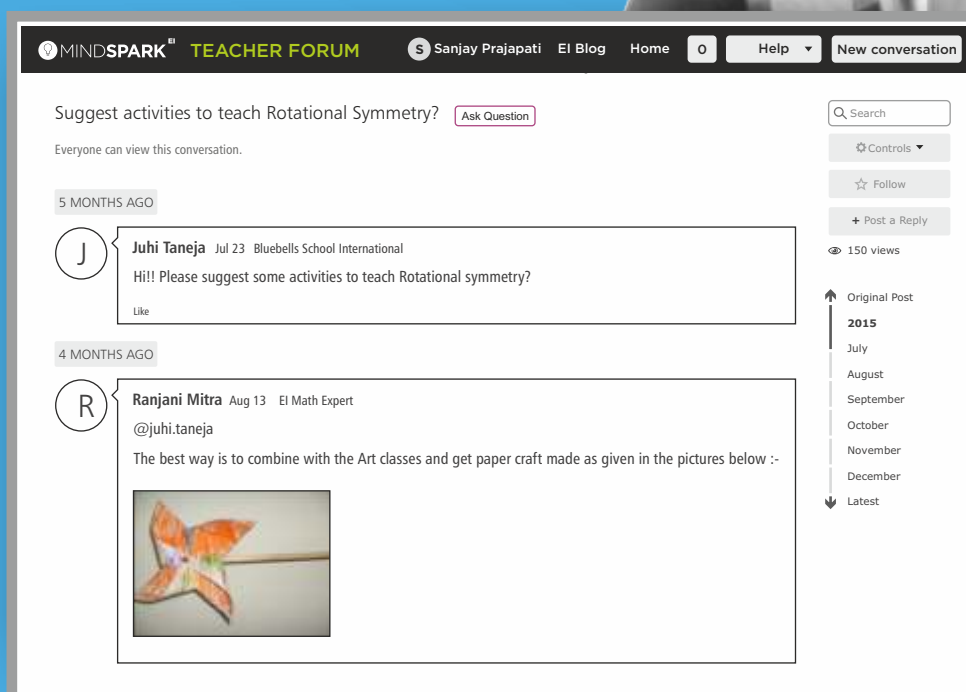
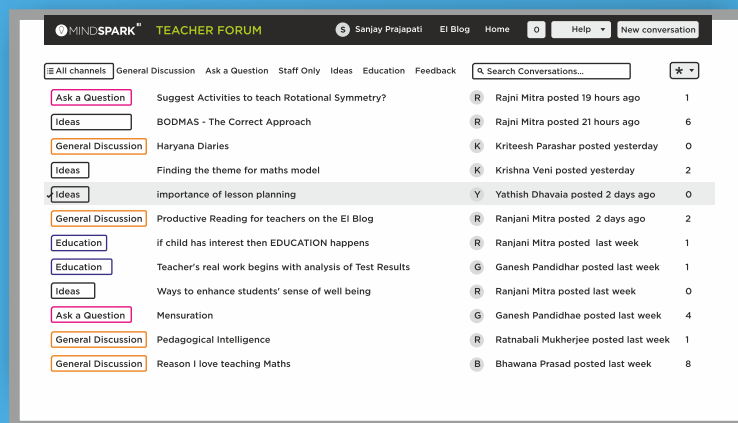
Student Interview
Summation of number series -
number sense

Common Wrong
Answers

*Teachers can select the IGCSE, ICSE, CBSE, Mindspark recommended curriculum, or customize the topic to suit their teaching flow.

Teacher forum

- An online community created for educators to connect with each other
- A platform where educators can share ideas, engage in discussions and seek help to overcome teaching challenges
- Accessible via the Mindspark teacher interface



STUDENT INTERFACE

Home Page

MINDSPARK

TOPICS

1 Volume - Custom 1 100%

2 Money - Custom 1 Complete it! 38%

3 Angles - Custom 7 Complete it! 58%

4 Constructions - Custom 1 100% 0%

CONTINUE (from last session)

AKBAR CLASS 6A

MAY DETAILS **KUDOS**

COMMENTS

NOTICE BOARD

Thank you for taking part in Kudos month Lots and lots of kudos were sent in the last 30 days. Your teachers will now be able to appreciate your good work using this feature. Happy

FEEDS

Akbar Six took the timed test Conversion of units.

Akbar Six Completed the topic Volume - Custom 1.

Ramanujan took the times test Conversion of units.

DASHBOARD **NCERT** **ACTIVITIES**

43 (this year)

© 2009-2015. Educational Initiatives Pvt. Ltd

Rewards Central

HOME > REWARDS CENTRAL

THESE ARE YOUR REWARDS

Click on rewards badges to get more information.

0 43 250

Sparkies

43 Sparkies Goodluck! This will be a challenging level.

0 SuperSparkies Back up! Earn 250 sparkies to upgrade.

0 MegaSparkies Back up! Earn 750 sparkies to upgrade.

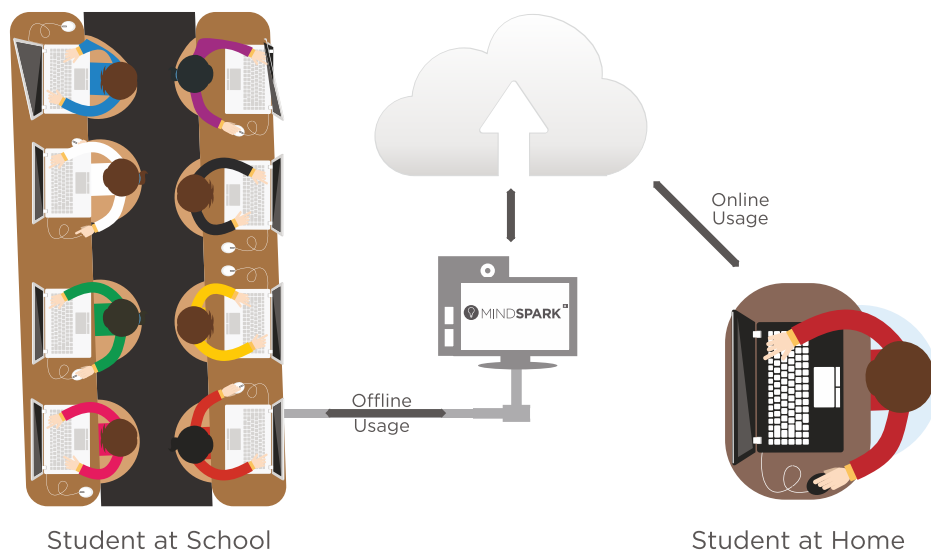
Activities

Step-by-step solver

Solve for y $5y - 6 = -16$				
1	$5y - 6$	=	-16	✓
✗	$5y + 16$	=	-6	You forgot to change the sign while moving -6 to the right side
2	$5y + 16$	=	6	✓
✗	$5y$	=	$6 + 16$	To move 16 from the left side to the right side you need to change the sign of the term
3	$5y$	=	$6 - 16$	✓
✗	$5y$	=	10	You have a sign error on the right side of the equal to sign
4	$5y$	=	-10	✓
∴	y	=	-2	✓

MINDSPARK IS NOW OFFLINE

Higher reliability at a lesser cost

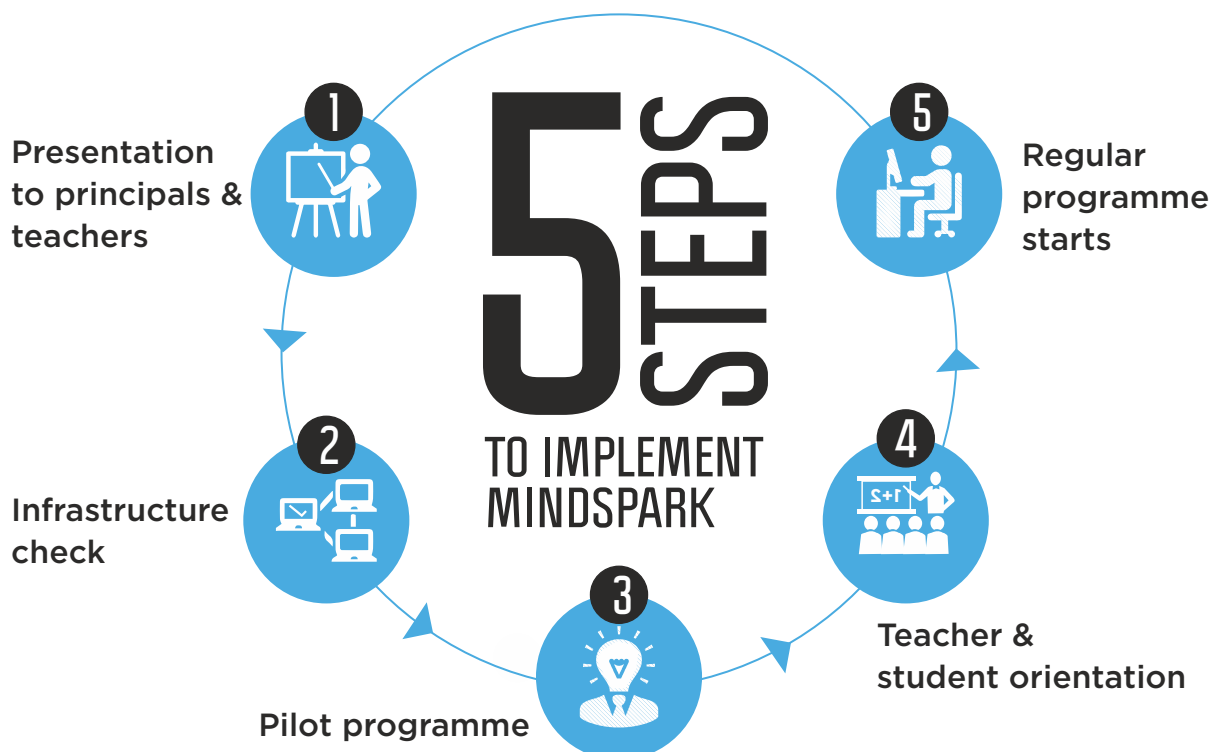


Mindspark can be implemented offline as well.

For regions with poor internet connectivity Mindspark can be implemented in the offline mode. Periodic synchronisation process ensures that product updates are available in offline mode.

www.mindspark.in

MINDSPARK IMPLEMENTATION



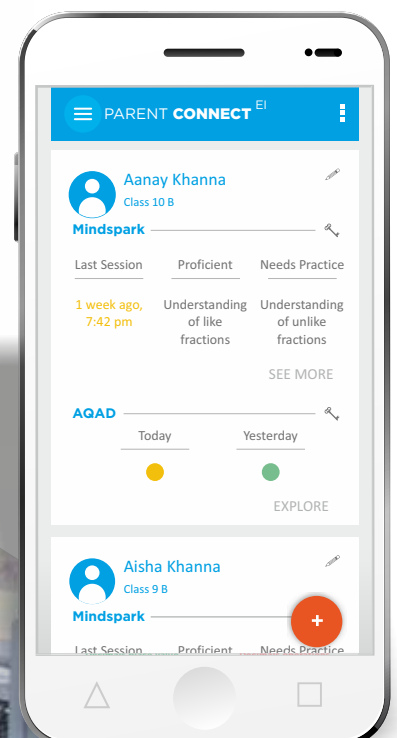
MINDSPARK SUPPORT

The Mindspark team is available at all times to provide assistance for smooth and effective implementation of the programme. Teachers and students are provided Mindspark orientation personally by the team. Regular support is provided via mails and calls. Mindspark team proactively reaches out to schools to share best practices in terms of usage. Consolidated reports based on mid-year and end-year reviews conducted in schools are shared with Principals and management.



MINDSPARK PARENT CONNECT

The Mindspark Parent Connect is an excellent feature through which parents can track their child's progress anytime and anywhere. Parents can track their child's topic wise progress, number of questions attempted, time spent on Mindspark and number of days logged in. The Parent Connect gives parents an authentic picture of their child's performance and improvement.



MINDSPARK IN GOVERNMENT AND PRIVATE SCHOOLS

Personalised learning tool for Mindspark Gujarati and Mindspark Maths in Gujarati language

5300
Students

280
Teachers

Gujarati Bhasha tool for semi-urban and rural primary schools of Gujarat

Customized to suit Gujarat Board curriculum

Continuous support on content and teaching methodology

Continuous assessment of student learning

Supported by The Torrent Group

Mindspark Maths in Private Schools

79000
Students

178
Schools

Forerunners in the field of personalized and adaptive learning

Delivered over 4 years of proven impact across schools in India, the Middle East and the US

Helps teachers integrate best teaching methodologies based on research across the world

Identifying learning gaps and sharing concrete ideas of remediation

Mindspark Centres

3000
Students

300
Working Days

3 Centres are located in slum areas of Delhi. Existing since July 2012

Each Centre has 20-30 computers for students to learn Language and Maths

Quarterly tests have demonstrated strong learning gains in low income students

Supported by Central Square Foundation, Tech Mahindra Foundation and Porticus

SOME OF THE SCHOOLS USING MINDSPARK

Central Zone

Bhopal - Asia Pacific International School, Billabong High International School
Chhatarpur - Delhi Public School
Gwalior - Sarti International School, The Scindia School, Fort
Indore - Advanced Academy, The Daly College
Raipur - N. H. Goel World School

East

Bhadrak - SBD International School
Bhubaneswar - KIIT International School, Mother's Public School, SAI International School
Dimapur - Hollotoli School, Hope Academy, The Maple Tree
Guwahati - Delhi Public School, Sarala Birla Gyan Jyoti
Hazaribag - St. Xavier's School
Kohima - Fernwood School, G Rio School
Kolkata - Akshar, Birla Bharati, Indus Valley World School, Modern High School for Girls
Kurseong - Goethals Memorial School, Himali Boarding School, St Helen's Secondary School-Daughter's of the Cross
Siliguri - Birla Divya Jyoti
Suri - The Levelfield School

International

Dubai - Amled School, GEMS Modern Academy, Rajagiri International School (RIS), The Kindergarten Starters
Sharjah - Our Own English High School, Girl's Branch

NORTH

Dehradun - Welham Boys' School
Delhi - J. M. International School, Shaheed Rajpal D A V Public School
Ghaziabad - D L F Public School
Gurgaon - GEMS International School, The Shri Ram Police Public School
Hisar - Vidya Devi Jindal School
Jammu - K C International School
Jodhpur - Alma Mater School
Lucknow - Seth M. R. Jaipuria School
Mau - Sunbeam School
New Delhi - Amity International School, Pushp Vihar, Birla Vidya Niketan (Junior Wing), Birla Vidya Niketan (Senior Wing), Bluebells School International, G. D. Salwan Public School, Sanskriti School, St. George's School, The Heritage School, Rohini, Vasant Valley School
Noida - Gyanshree School, Vidya and Child
Panchkula - Bhavan Vidyalaya
Patiala - Yadavindra Public School
Sikandrabad - VidyaGyan School
Sitapur - VidyaGyan School
Varanasi - Sunbeam English School, Bhagwanpur, Sunbeam School, Lahartara, Sunbeam School, Varuna, Sunbeam Suncity (School & Hostel)

SOUTH

Bangalore - Cambridge School, K R Puram, Carmel High School, Basaveshwarnagar, Christ Academy CBSE School, Chrysalis High, Bannerghatta, Chrysalis High, Kadugodi, Chrysalis High, Varthur, Chrysalis High, Yelahanka, Deccan International School, Deccan International School - IGCSE, Deens Academy, Delhi Public School, Bangalore - North, Delhi Public School, Bangalore - South, Delhi Public School, Bangalore East, Delhi Public School, Electronic City, GEAR Innovative International School, Greenwood High (An International School), Gurukul Public School, Harvest

International School, Innisfree House School, Inventure Academy, M E C Public School, CBSE, Saandeepani Academy For Excellence, Silver Oaks The School Of Bangalore, Sri Kumaran Children's Academy, Sri Kumaran Children's Home, Sri Kumaran Children's Home - CBSE, Sri Kumaran Children's Home, Doddakallasandra, Sri Kumaran Public School - ICSE, SSB International School, ICSE, The Samhita Academy, V V S Gandhi Centenary English Primary School

Chennai - H L C International, K C High School, Knowledge Academy School, Manthan Vidyashram
Coimbatore - Kikani Vidhya Mandir, Kovai Public School
Ernakulam - St. Peter's Senior Secondary School
Gokak - K.L.E. Society's School
Hiriyur - Rastriya Academy
Hosur - Sishya School, The Ashok Leyland School
Hyderabad - Glendale Academy International, Regelford International School, Sancta Maria International School, Silver Oaks The School of Hyderabad, Sri Aurobindo International School, The Hyderabad Public School
Karur - Chettinad Vidya Mandir
Kotagiri - Riverside Public School
Kulasekaram - SBJ Vidya Bhavan International School
Madurai - Akshara Matriculation Higher Secondary School, Jeevana School, Krishnamal Ramasubbaiyer School, TVS Matriculation Higher Secondary School
Rajapalayam - Chinmaya Vidyalaya P.A.C.R. Mat. H.S. School, Chinmaya Vidyalaya Smt PACR Sethurammammal Nursery and Primary School, Sri Ramana Academy, Srimathi Lingammal Ramaraju Rotary Vidyalaya Mat. Higher Secondary School
Ranipet - The Geekay World School, The Geekay World School (CBSE)
Sivakasi - KPAT Dharmaraj Nadar- Rojapputhayammal Sivakasi Jaycees Mat. Hr. Sec. School, Sri Shenbaga Vinayagar Matriculation Higher Secondary School,
Thanjavur - Thamarai International School
Theni - Sri Chandra Gupta Maurya International School
Thiruchengode - SRRI SPK Public School
Tiruchirapalli - Kamala Niketan Montessori School
Tirupur - Abacus International Montessori School, Frontline Millennium School (CBSE)

West

Ahmedabad - Anand Niketan International, Anand Niketan, Satellite, Gems Genesis International School, St. Kabir School, Naranpura, The Riverside School, Zydus School for Excellence, Zydus School for Excellence, Godhavi
Buldana - Sahakar Vidya Mandir & Junior Science College
Jamnagar - Sarojben Memorial International School
Kalol - Amrit Vidyalaya
Margao - Manovikas English Medium School
Mumbai - Activity High School, Beacon High, Champion School, G. D. Somani Memorial School, Hasanat High School, Kohinoor International School, MET Rishikul Vidyalaya, Nahar International School, S.M Shetty International School, St. Mary's High School, Andheri (West), The Cathedral & John Connon School (Junior)
Nashik - Fravashi International Academy, Rasbihari International School, Wisdom High International School
Panchgani - Sanjeevan Vidyalaya, Sanjeevan Vidyalaya (Senior Section)
Pune - Saraswati Educational Society's Gurukul, Vidya Valley School
Rajkot - M V Dhulashia and JHC Trust Schools, New Era School, S N Kansagra School, The Galaxy School - Wadi Campus
Surat - Essar International School, G D Goenka International School
Thane - Lodha World School, Ram Ratna International School, Ram Ratna Vidya Mandir, Birla School, Kalyan, Holy Angels School & Junior college, Lodha World School, Palava, Jindal Vidya Mandir
Vadodara - St Kabir Indian International School
Washim - Happy Faces - The Concept School

EI ACCELERATING EDUCATION

EI's innovations in the field of education has earned the organization accolades from various fraternities. The organization's efforts were featured on *India Today's* May 2014 and June 2015 issues.

The May 2014 issue featured 10 sectors in India needing reform and invited key individuals to outline specific actions in the chosen sectors, a document of which was presented to Prime Minister Narendra Modi. EI was proud to be invited to outline the vision

document for Primary and Secondary School Education, with Mr. Sridhar Rajagopalan representing the sector. The same article was then re-published in the magazine for its "Out of Box PM" June 2015 issue.

Another feather in EI's cap was being featured on India's leading financial daily *Mint*, which covered its offerings Mindspark and ASSET and their impact on present-day learning.

This recognition further encourages EI to continue its efforts towards creating a world where children everywhere are learning with understanding.



Testimonial

Mindspark makes math fun. In addition, it is quite comprehensive. All the conceivable math topics in a particular class are covered. For each of the topics, there are a great number of questions - all coming at the students with increasing difficulty level. Again, the best part of Mindspark is that the questions are thinking-oriented. They test and teach concepts. I can't tell you how difficult it is to create even 10 truly thinking - oriented questions - let alone around 2500-3000 questions for each class that Mindspark has created. It is a humongous job, and I congratulate Educational Initiatives (EI) for being able to do it.

In addition, Mindspark lets students progress at their own pace. I really wish Mindspark could create a regional language version and get the government schools to use it. Our millions of children will really be math literate then - instead of coming last in international math tests like PISA.

Arghya Banerjee, Director, The Levelfield School, Suri



HEAD OFFICE

A-201, Baleshwar Square, Opp. ISKCON Temple, SG Highway,
Ahmedabad-380015, Gujarat

Tel: +91-79-66211600 | Fax: +91-79-66211700

Toll free number: 1800-102-8885 (Monday - Friday: 9:00 am to 6:00 pm IST)

E: mindspark@ei-india.com | W: www.mindspark.in